

NEW CONSTRUCTION

FINANCING AVAILABLE

www.KingdomPlaceHomes.com



MODEL 7: KING DAVID

STARTING PRICE
\$535,800

- 4 Bedrooms
- 2.5 Bathrooms
- 2-Car Garage
- Laundry
- Study
- Family Room
- Dining Room
- Large Kitchen
- Total Area: 2,679 SF

Additional options & upgrades available



A new private community of beautiful single family homes within the desired Laurel School District of Hickory Township, located at:
1700 Harlansburg Road, New Castle, PA 16101



CONTACT:

Renee Dean

Howard Hanna Real Estate

Realtor®, Associate Broker

(724) 730-6909 (cell)

(724) 654-5555 x 236 (office)

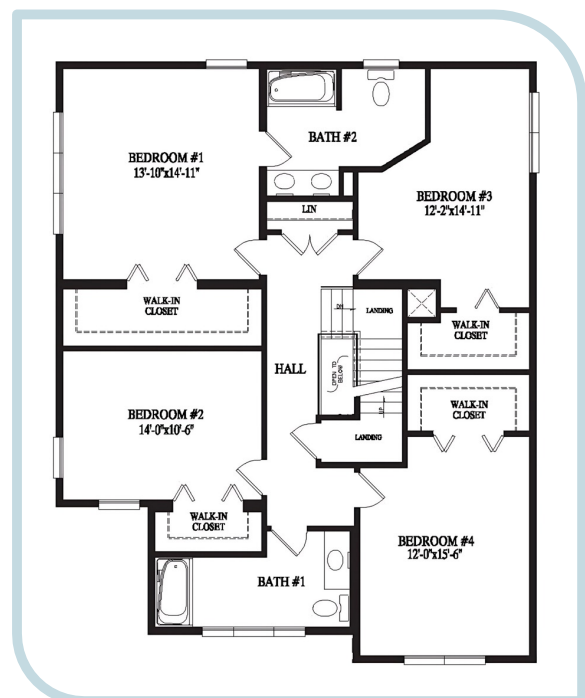
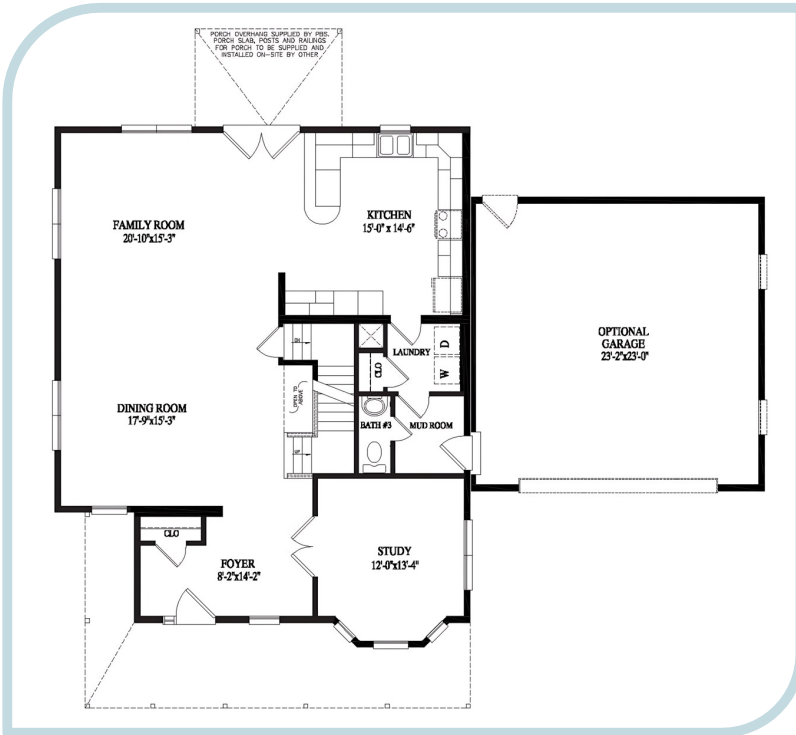
rdean@howardhanna.com



NEW CONSTRUCTION

MODEL 7: KING DAVID

www.KingdomPlaceHomes.com



A new private community of beautiful single family homes within the desired Laurel School District of Hickory Township, located at: **1700 Harlansburg Road, New Castle, PA 16101**



CONTACT:
Renee Dean
Howard Hanna Real Estate
Realtor®, Associate Broker
(724) 730-6909 (cell)
(724) 654-5555 x 236 (office)
rdean@howardhanna.com



NEW CONSTRUCTION

MODEL 7: KING DAVID

GENERAL LIST OF ITEMS INCLUDED, OPTIONS AND ITEMS NOT INCLUDED WITH HOME

www.KingdomPlaceHomes.com

** FOR FULL DETAILS CLICK THIS LINK FOR THE KINGDOM PLACE STANDARD FINISHES, OPTIONS AND UPGRADE CATALOGUE*

Standard Items Included

- Exterior siding
- Exterior roof shingles (various colors)
- Exterior and interior doors (various colors & styles)
- Front sodded grass / rear yard seeded
- Standard landscape package
- 3-month landscape maintenance services
- Front exterior lamp post
- Concrete front walk (front door to street)
- Exterior shutters (various colors & styles)
- Exterior windows (various colors & styles)
- Appliance package allowance (stove, refrigerator, dishwasher, microwave) - \$2,600
- Exterior and interior hardware (various colors & styles)
- Front and rear doorbell and chime
- Interior trim and casing (various styles)
- Wood finish vinyl flooring first floor (various colors & styles)
- Carpet on stairs and 2nd floor (various colors & styles)
- Floor and wall tile for kit. and baths (various colors & styles)
- Lighting fixtures (various options)
- Kitchen & bathroom cabinets (various colors & styles)
- Plumbing fixtures (various colors & styles)
- Kitchen and bathroom sinks
- Kitchen formica Wilson Art counter tops (various colors)
- Bathroom mirrors and medicine cabinets
- Closet shelving
- Crawl space storage with interior access
- Front porch (entry area - not wrap-around)
- R-19 wall insulation, R-21 roof insulation
- 1-year home warranty

Available Upgrades – See Selection Book

- Wood and tile floors
- Granite, quartz, corian countertops
- Lighting fixtures
- Plumbing fixtures
- Doors
- Windows
- Kitchen and bathroom cabinets
- Roof shingles
- Exterior siding and shutters
- All Standard items - numerous upgrade options available

Items Not Included

- Garage (add \$25,000 for standard 2-car garage)
- Full basement (interior crawl space storage is included)
- Wrap-around porch
- Wood deck
- Bonus/storage room finishes (bonus rooms include unfinished and unpainted drywall only)

Available Options – See Selection Book

- Wood deck
- Wrap-around porch
- Gazebos (various options and styles)
- Sheds (various options and styles)
- Rear patio (various options and styles)
- Solar system
- Smart home and security
- Landscape upgrades
- Fireplace (various options and styles)
- Wood coffered ceilings
- Basement options (8', 9', 10.5')

****Note:** This list provides a general overview of standard, upgrades and optional items included and not included with Kingdom Place homes. Please clarify all finish details with your sales representative.*

**** FOR FULL DETAILS CLICK THIS LINK FOR THE
KINGDOM PLACE STANDARD FINISHES, OPTIONS
AND UPGRADE CATALOGUE***

A new private community of beautiful single family homes within the desired Laurel School District of Hickory Township, located at:
1700 Harlansburg Road, New Castle, PA 16101



CONTACT:
Renee Dean
Howard Hanna Real Estate
Realtor®, Associate Broker
(724) 730-6909 (cell)
(724) 654-5555 x 236 (office)
rdean@howardhanna.com